

THE PATHFINDER

Fall/Winter 2019

"A gift opens the way, and ushers the giver into the presence of the great."

(Proverbs 18:16)

Mark your calendars! On November 14, Pathways will be participating in Give to the Max Day. This annual event has turned into the "Minnesota Giving Holiday". We are inviting our generous supporters to take part and make a difference. Donations on Give to the Max Day will go towards facility improvements at Camp Emmaus.

To make a donation, please go to PathwaysBibleCamps.org.

Increasing the level of excitement, certain Pathways supporters have joined forces and set up a matching gift challenge. The Glas and Andreasen families have contributed for a matching gift of \$5500. We are asking for your generosity to unlock these funds and double the impact of your gift.

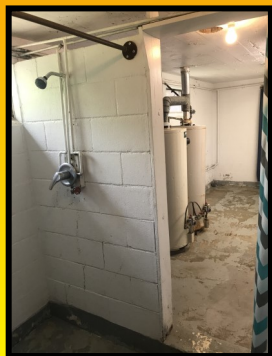
give TO THE **MAX** 

NOV. 14, 2019

www.pathwaysbiblecamps.org

Girls' bath house

to get a much-needed makeover



With your support on Give to the Max Day, as well as the remaining \$5,000 of a gift from the Trinity Lutheran Church Foundation in Moorhead, the girls bath house at Camp Emmaus can receive a much-needed makeover.

These pictures show the current state of the bath house and our plan is to install new partitions, water heaters, and individual shower stalls as well as paint and resurface the floor. We won't take away from the authenticity of camp or the outdoor, rustic atmosphere, but certain updates are quite necessary.

Other Improvements



It is our hope that your generous gifts will usher the way for additional refurbishing at camp. The staff building, camp store, and offices also need a facelift. Some projects have already started but there is still

much more to be done. Chris Andreasen and Brad Fossen, Pathways Executive Director and Facilities Director, installed two sets of patio doors donated by Anthony and Karin Gambell. This has transformed the space that was once the garage, to provide a better view of God's creation and camp activities in action. What was once the garage has become an office area, but now the tools and shop materials need to find a new home.

We are counting on your generous support to carry out these projects. These refurbishments will play a huge part in making the camp experience for future campers an even greater one.

Our Greatest Asset



A few weeks ago we had the opportunity to attend the annual Lutheran Outdoor Ministry Network Territory Gathering. This is an event where like-minded camp professionals get together to network, worship, and learn from one another. This year's event was held at Joy Ranch, an 1880's prairie town with modern high comfort amenities, just outside of Watertown, SD. My personal highlight of the gathering was a trail ride on a horse named Brandy. However, even more important than the trail ride was what we took away from the workshop focusing on How to Recruit, Renew, and Retain staff members. The breakout sessions identified solutions and developed a comprehensive action plan that will help us identify and recruit the right people, renew and train our people to

be successful, and retain the excellent staff members that God has placed in our trust. With your help connecting youth leaders in our area to Pathways, we can successfully avert the staffing crisis that is affecting more than just our camps.

Chris Andreasen



EMMAUS NEWS

Earlier this fall I had the pleasure of hosting a scrapbooking retreat and the Fall Women of Faith Retreat. Faith, music, art and fun were in the fall air. I was amazed at the talent and love that came together in one room during these retreats. At the Women of Faith retreat we were blessed to have Jennifer Johnson play guitar and lead prayers for us. I taught a painting class for the ladies and we created beautiful birch trees. Donna, as always, provided us with spectacular meals that were enjoyed by everyone. We are happy to announce the

Spring Women of Faith Retreat

March 26-29, 2020

If you are interested in participating in this retreat or wish to book a retreat of your own please contact me at pathays@pathwaysbiblecamps.org or call 218-227-5107

Misty Fry





"This experience truly strengthened my faith and I have felt a calling to work with youth and be a leader in faith." Nikki



Houseboat Trips

Pathways Houseboat trips to Rainy Lake have a lasting impact on campers, counselors, and youth group leaders. Last summer, one of our Houseboat counselors had the experience of a lifetime leading a youth group from Calvary Lutheran Church in Willmar, MN. Upon returning from the Pathways Houseboat trip, she felt God's call to service in her life. She is now teaching confirmation at her home church in Moorhead.

HOUSEBOAT IS BACK IN 2020

Pathways is proud to continue the tradition of offering the Houseboat experience. Select dates are available for groups next summer. Call the Pathways office and visit our website for more information on this life changing adventure program in God's pristine wilderness.

Thank you

for your thoughts, prayers, participation, and financial support of

Pathways Lutheran Outdoor Ministries

A big THANK YOU to everyone who contributed to our 50th Anniversary celebration and helped make it great!



Notes

In Pathways 50th year of camping ministry we...



Welcomed over 588 campers to Camp Emmaus



Reached over 633 youth at 19 Day Camps across northwest Minnesota



Led team building and leadership training



Provided spiritual renewal opportunities



Camp Testimonials

The Pathways Bible Camp experience has a huge impact on the faith in the lives of our participants.



First time campers establish their faith in God at camp.



Returning campers continue to grow in their faith.



Camp Counselors learn interpersonal skills and share their faith stories with others.



Families take the excitement of camp home with them and get involved in their church.

We want to hear your story! Share the impact that Pathways has had on your life. Pathways@PathwaysBibleCamps.org

"Camp has impacted my life in such a major way that I can't even imagine not being at camp during the summer. Camp Emmaus really does have the power to change lives"
Alex Fuchs





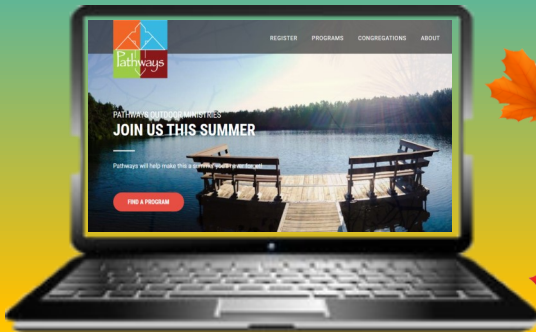
PATHWAYS INC.

213 8th St. S Moorhead, MN 56560

PO Box 627

Moorhead, MN 56561-0627

**Online Camp Store is coming soon
for your holiday shopping convenience!
Watch Facebook and Instagram
for announcements.**



**Visit our new and improved
Camp Store next Summer
Located in Cabin Grace**



"Not only did camp help me choose my major, but it also prepared me to work with young adults. Seeing campers grow from Sunday to Friday is an amazing thing to experience as a counselor. Camp has opened my eyes and heart to a new life of serving" Kaley



CampSunday
DayCamp
RopesCourse
HouseBoat
CanoeTrips
Retreats
CampStore



Pathwaysbiblecamps



Pathways Lutheran Outdoor Ministries